

---

---



**J. RAJAGOPALAN**  
Chief Executive Officer

+65 9863 7870  
+65 6300 1526  
email : raja@svisingapore.com  
swmera@gmail.com

Blk 609 # 05-174  
Elias Road,  
Singapore 510609

**SVL SINGAPORE SERVICES**

# M.T.-----

## Thermal Imaging

---

### *Auxiliary Engines*

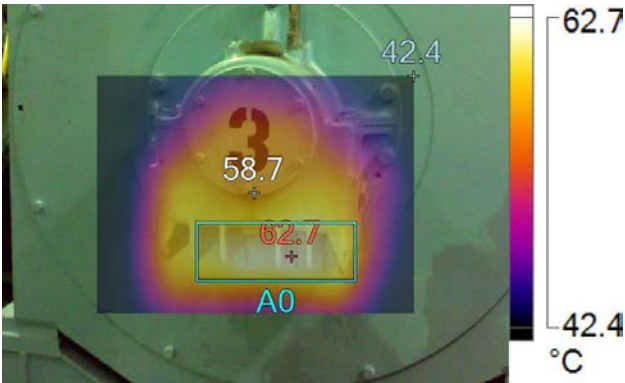
---



Prepared for

---

---



**IR005390.IS2- No3 Aux engine**  
12/4/2016 8:47:22 AM

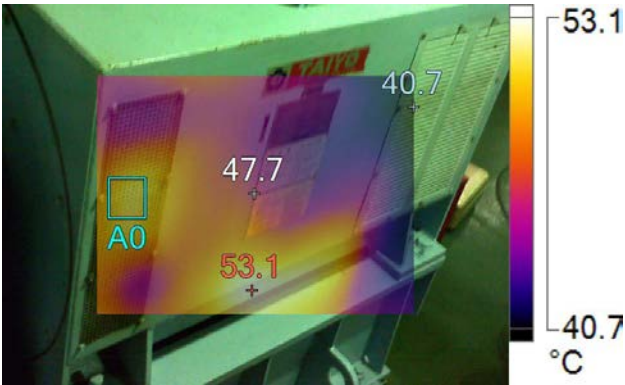


**Visible Light Image**

**Main Image Markers**

Name	Avg	Min	Max	Emissivity
A0	61.3°C	56.8°C	62.7°C	0.95

Name	Temperature	Emissivity
Centerpoint	58.7°C	0.95
Hot	62.7°C	0.95
Cold	42.4°C	0.95



**IR005391.IS2- No3 Aux engine**  
12/4/2016 8:48:44 AM

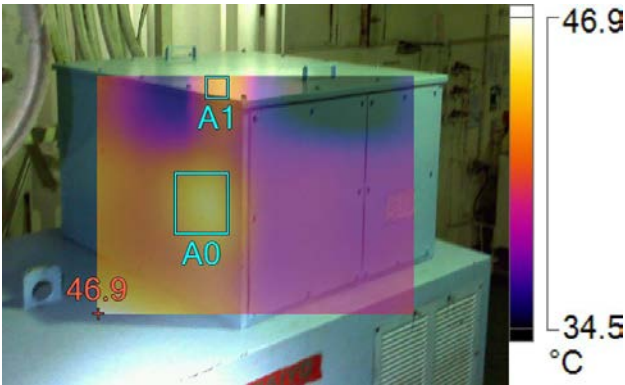


**Visible Light Image**

**Main Image Markers**

Name	Avg	Min	Max	Emissivity
A0	51.5°C	50.2°C	52.0°C	0.95

Name	Temperature	Emissivity
Centerpoint	47.7°C	0.95
Hot	53.1°C	0.95
Cold	40.7°C	0.95



**IR005392.IS2- No3 Aux engine**  
12/4/2016 8:48:59 AM

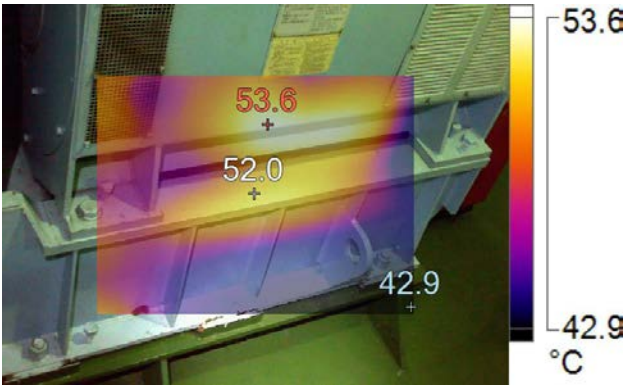


**Visible Light Image**

**Main Image Markers**

Name	Avg	Min	Max	Emissivity
A0	44.5°C	42.9°C	45.5°C	0.95
A1	42.7°C	41.8°C	43.4°C	0.95

Name	Temperature	Emissivity
Hot	46.9°C	0.95



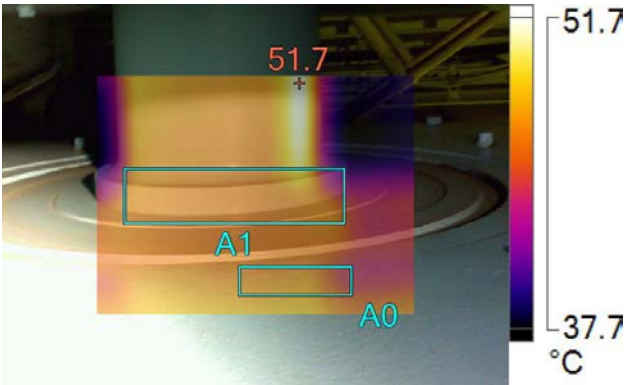
**IR005393.IS2- No3 Aux engine**  
12/4/2016 8:49:09 AM



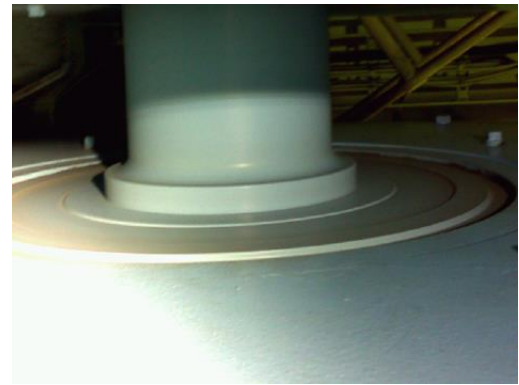
**Visible Light Image**

### Main Image Markers

Name	Temperature	Emissivity
Centerpoint	52.0°C	0.95
Hot	53.6°C	0.95
Cold	42.9°C	0.95



IR005394.IS2- No3 Aux engine



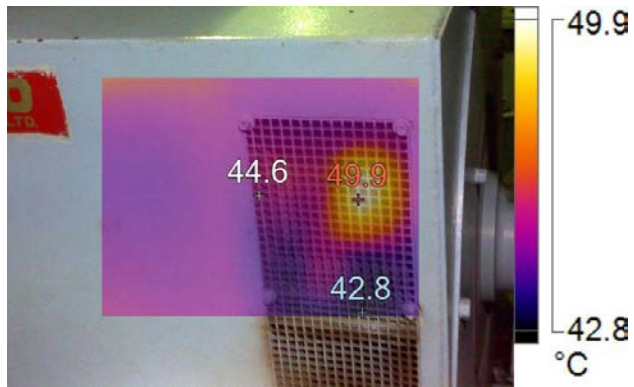
Visible Light Image

12/4/2016 8:49:38 AM

**Main Image Markers**

Name	Avg	Min	Max	Emissivity
A0	48.3°C	46.3°C	49.3°C	0.95
A1	48.0°C	40.9°C	50.6°C	0.95

Name	Temperature	Emissivity
Hot	51.7°C	0.95



IR005395.IS2- No3 Aux engine



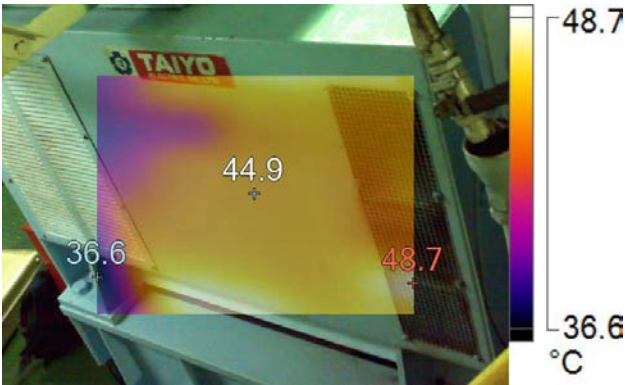
Visible Light Image

12/4/2016 8:50:13 AM

### Main Image Markers

Name	Temperature	Emissivity
Centerpoint	44.6°C	0.95
Hot	49.9°C	0.95
Cold	42.8°C	0.95





IR005396.IS2- No3 Aux engine



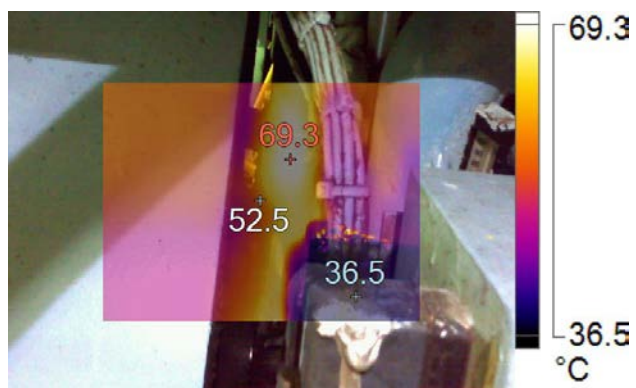
Visible Light Image

12/4/2016 8:50:54 AM

**Main Image Markers**

Name	Temperature	Emissivity
Centerpoint	44.9°C	0.95
Hot	48.7°C	0.95
Cold	36.6°C	0.95





IR005397.IS2- No3 Aux engine

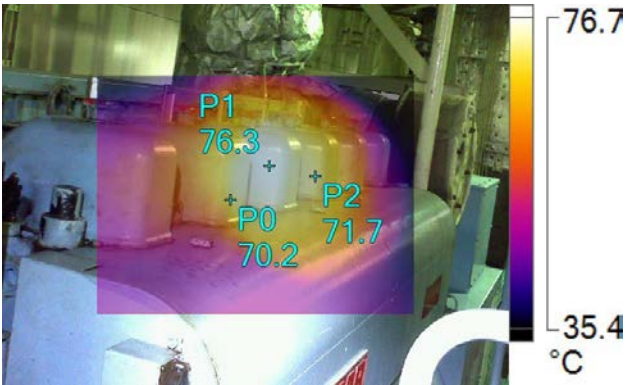


Visible Light Image

12/4/2016 8:52:51 AM

### Main Image Markers

Name	Temperature	Emissivity
Centerpoint	52.5°C	0.95
Hot	69.3°C	0.95
Cold	36.5°C	0.95



IR005398.IS2- No3 Aux engine

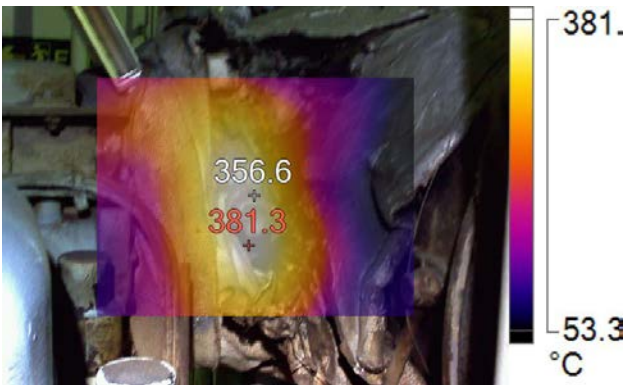


Visible Light Image

12/4/2016 8:54:34 AM

**Main Image Markers**

Name	Temperature	Emissivity
P0	70.2°C	0.95
P1	76.3°C	0.95
P2	71.7°C	0.95



IR005399.IS2- No3 Aux engine



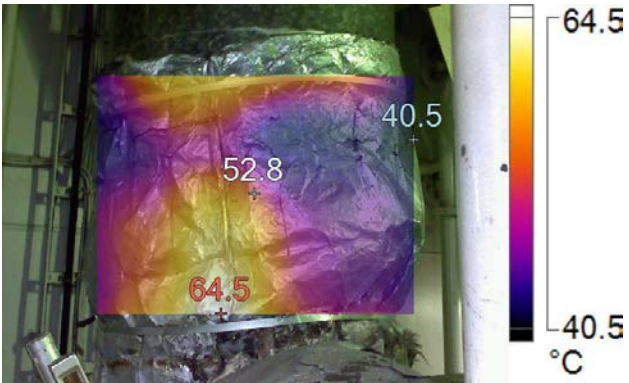
Visible Light Image

12/4/2016 8:55:39 AM

Temperatures exceeding 220 Deg c which is Solas violation and fire hazard

#### Main Image Markers

Name	Temperature	Emissivity
Centerpoint	356.6°C	0.95
Hot	381.3°C	0.95



IR005400.IS2- No3 Aux engine

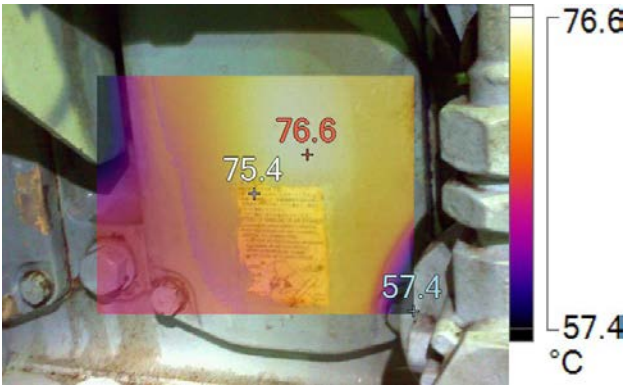


Visible Light Image

12/4/2016 8:55:56 AM

### Main Image Markers

Name	Temperature	Emissivity
Centerpoint	52.8°C	0.95
Hot	64.5°C	0.95
Cold	40.5°C	0.95



IR005401.IS2- No3 Aux engine

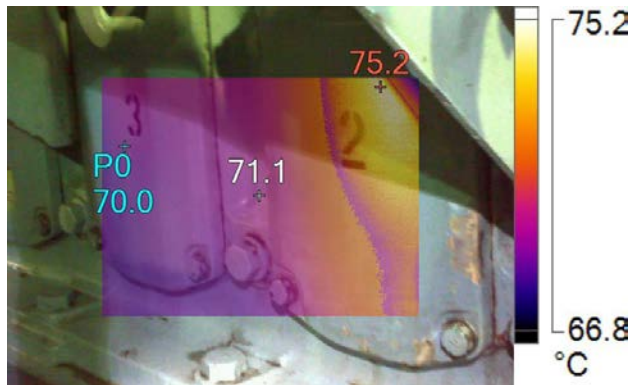


Visible Light Image

12/4/2016 8:57:08 AM

### Main Image Markers

Name	Temperature	Emissivity
Centerpoint	75.4°C	0.95
Hot	76.6°C	0.95
Cold	57.4°C	0.95



IR005402.IS2- No3 Aux engine



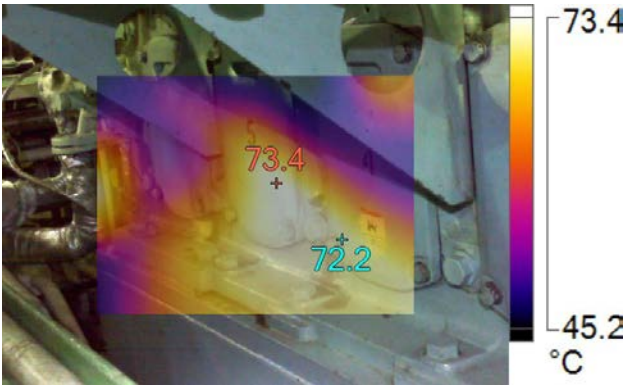
Visible Light Image

12/4/2016 8:57:15 AM

### Main Image Markers

Name	Temperature	Emissivity
Centerpoint	71.1°C	0.95
Hot	75.2°C	0.95
P0	70.0°C	0.95





IR005403.IS2- No3 Aux engine



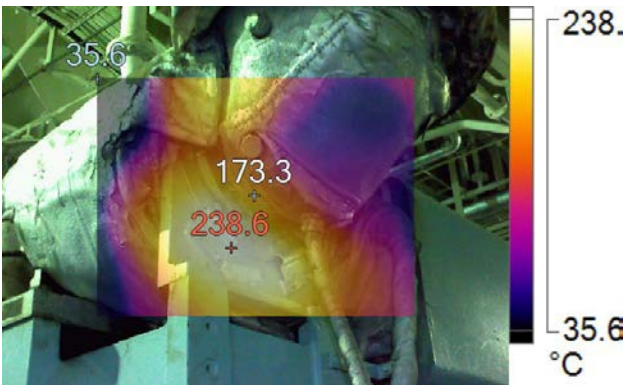
Visible Light Image

12/4/2016 8:57:28 AM

### Main Image Markers

Name	Temperature	Emissivity
Hot	73.4°C	0.95
P0	72.2°C	0.95





IR005404.IS2- No3 Aux engine



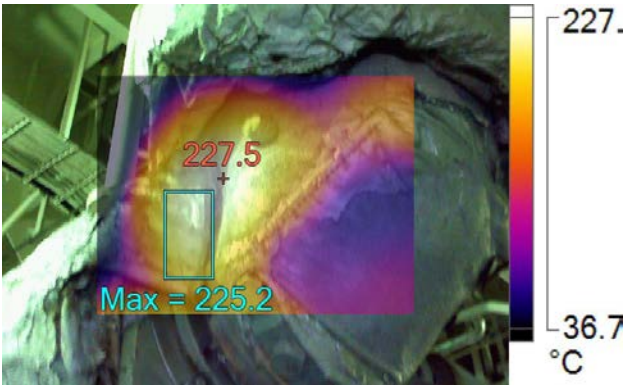
Visible Light Image

12/4/2016 8:57:58 AM

**Temperatures exceeding 220 Deg c which is Solas violation and fire hazard**

#### Main Image Markers

Name	Temperature	Emissivity
Centerpoint	173.3°C	0.95
Hot	238.6°C	0.95
Cold	35.6°C	0.95



IR005405.IS2- No3 Aux engine



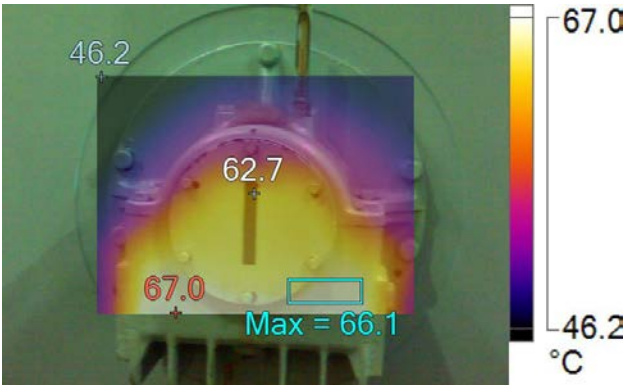
Visible Light Image

12/4/2016 8:58:17 AM

**Main Image Markers**

Name	Avg	Min	Max	Emissivity
A0	189.6°C	140.2°C	225.2°C	0.95

Name	Temperature	Emissivity
Hot	227.5°C	0.95



IR005501.IS2- No1 Aux engine



Visible Light Image

12/4/2016 1:20:46 PM

**Main Image Markers**

Name	Avg	Min	Max	Emissivity
A0	65.2°C	64.1°C	66.1°C	0.95

Name	Temperature	Emissivity
Centerpoint	62.7°C	0.95
Hot	67.0°C	0.95
Cold	46.2°C	0.95



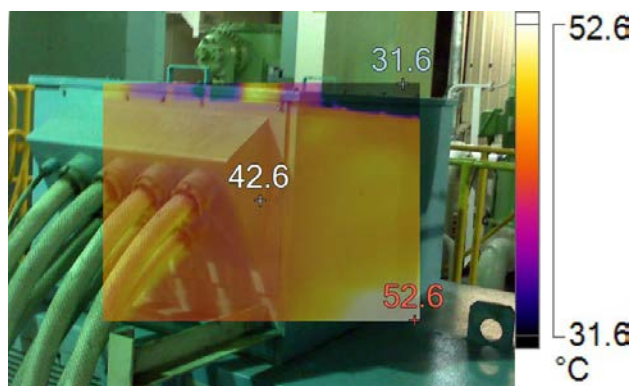
**IR005502.IS2- No1 Aux engine**  
12/4/2016 1:21:23 PM



**Visible Light Image**

**Main Image Markers**

Name	Temperature	Emissivity
Centerpoint	51.0°C	0.95
Hot	57.5°C	0.95
Cold	45.5°C	0.95



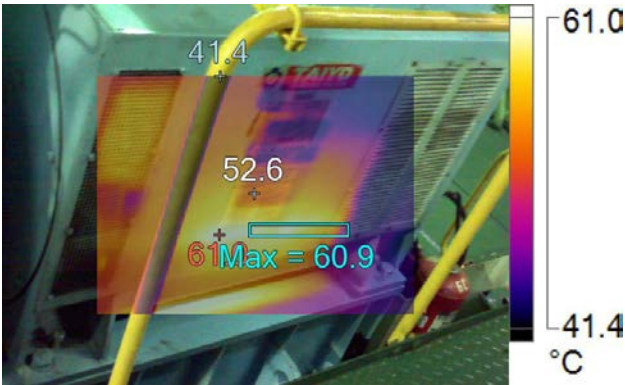
**IR005503.IS2- No1 Aux engine**  
12/4/2016 1:22:05 PM



**Visible Light Image**

**Main Image Markers**

Name	Temperature	Emissivity
Centerpoint	42.6°C	0.95
Hot	52.6°C	0.95
Cold	31.6°C	0.95



**IR005504.IS2- No1 Aux engine**  
12/4/2016 1:22:39 PM



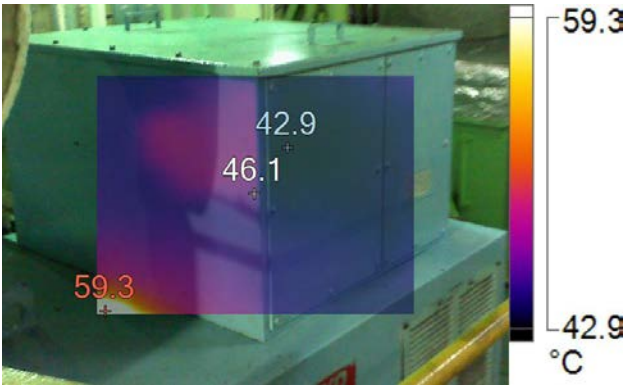
**Visible Light Image**

**Main Image Markers**

Name	Avg	Min	Max	Emissivity
A0	57.1°C	46.4°C	60.9°C	0.95

Name	Temperature	Emissivity
Centerpoint	52.6°C	0.95
Hot	61.0°C	0.95
Cold	41.4°C	0.95





**IR005505.IS2- No1 Aux engine**  
12/4/2016 1:22:53 PM

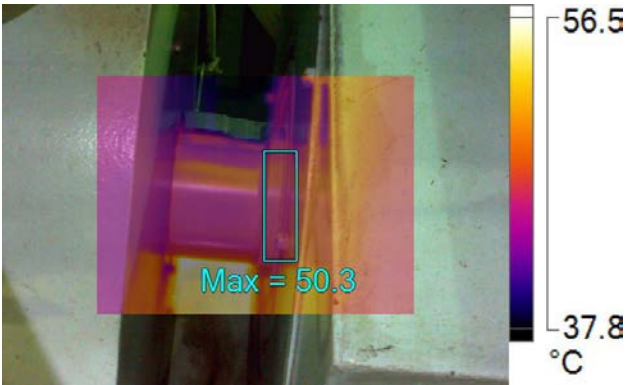


**Visible Light Image**

**Main Image Markers**

Name	Temperature	Emissivity
Centerpoint	46.1°C	0.95
Hot	59.3°C	0.95
Cold	42.9°C	0.95





**IR005506.IS2- No1 Aux engine**  
12/4/2016 1:23:05 PM



**Visible Light Image**

**Main Image Markers**

Name	Avg	Min	Max	Emissivity
A0	48.9°C	46.3°C	50.3°C	0.95



**IR005507.IS2- No1 Aux engine**  
12/4/2016 1:24:05 PM



**Visible Light Image**

**Main Image Markers**

Name	Avg	Min	Max	Emissivity
A0	53.5°C	52.3°C	55.0°C	0.95



**IR005508.IS2- No1 Aux engine**  
12/4/2016 1:26:31 PM



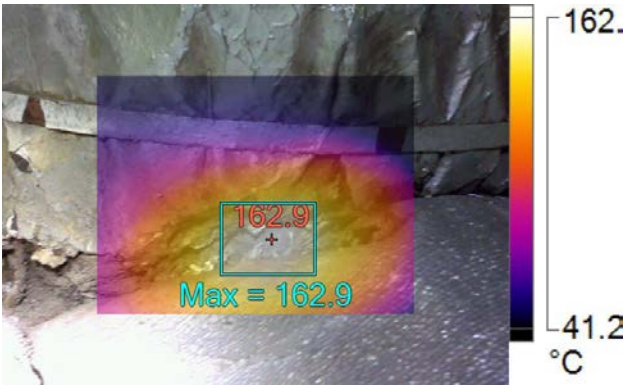
**Visible Light Image**

**Temperatures exceeding 220 Deg c which is Solas violation and fire hazard**

**Main Image Markers**

Name	Avg	Min	Max	Emissivity
A0	234.8°C	197.6°C	247.9°C	0.95

Name	Temperature	Emissivity
Hot	247.9°C	0.95



**IR005509.IS2- No1 Aux engine**  
12/4/2016 1:26:51 PM

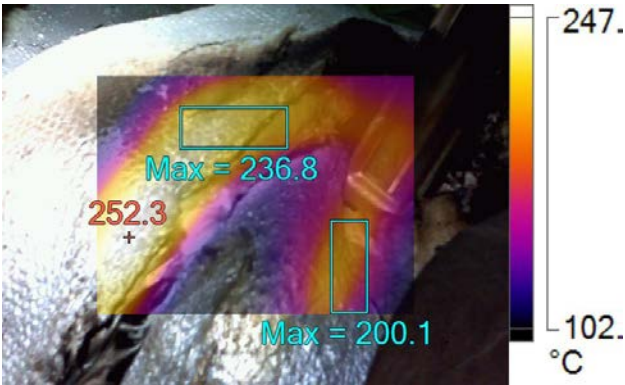


**Visible Light Image**

**Main Image Markers**

Name	Avg	Min	Max	Emissivity
A0	151.5°C	115.2°C	162.9°C	0.95

Name	Temperature	Emissivity
Hot	162.9°C	0.95



**IR005510.IS2- No2 Aux engine**  
12/4/2016 1:28:07 PM



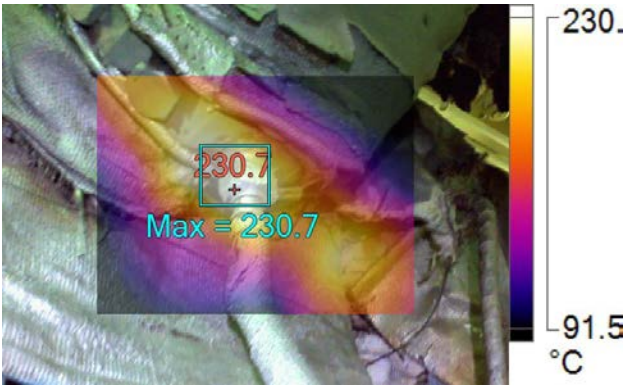
**Visible Light Image**

**Temperatures exceeding 220 Deg c which is Solas violation and fire hazard**

**Main Image Markers**

Name	Avg	Min	Max	Emissivity
A0	217.1°C	182.0°C	236.8°C	0.95
A1	188.1°C	155.8°C	200.1°C	0.95

Name	Temperature	Emissivity
Hot	252.3°C	0.95



**IR005511.IS2- No2 Aux engine**  
12/4/2016 1:28:33 PM



**Visible Light Image**

**Temperatures exceeding 220 Deg c which is Solas violation and fire hazard**

**Main Image Markers**

Name	Avg	Min	Max	Emissivity
A0	221.0°C	193.5°C	230.7°C	0.95

Name	Temperature	Emissivity
Hot	230.7°C	0.95





**IR005512.IS2 –No2 Aux engine**  
12/4/2016 1:28:46 PM



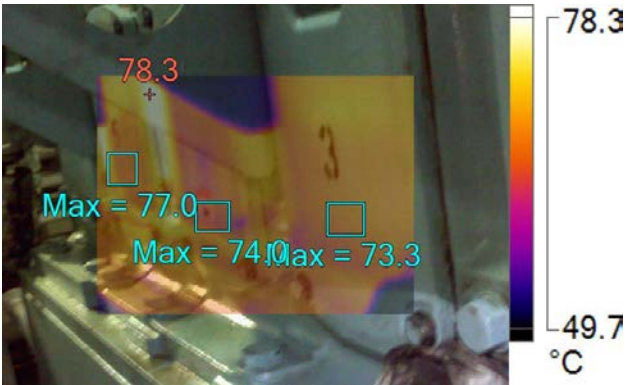
**Visible Light Image**

**Main Image Markers**

Name	Avg	Min	Max	Emissivity
A0	264.9°C	219.4°C	292.6°C	0.95

Name	Temperature	Emissivity
Hot	292.6°C	0.95





**IR005514.IS2-No2 Aux engine**  
12/4/2016 1:30:38 PM



**Visible Light Image**

**Main Image Markers**

Name	Avg	Min	Max	Emissivity
A0	72.3°C	71.3°C	73.3°C	0.95
A1	71.0°C	70.2°C	74.0°C	0.95
A2	72.5°C	71.3°C	77.0°C	0.95

Name	Temperature	Emissivity
Hot	78.3°C	0.95



**IR005515.IS2-No2 Aux engine**  
12/4/2016 1:31:51 PM

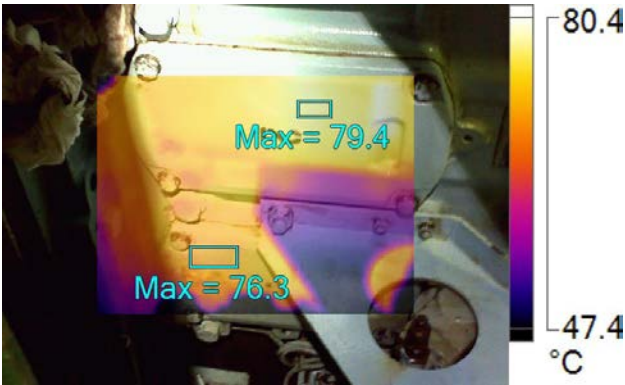


**Visible Light Image**

**Main Image Markers**

Name	Avg	Min	Max	Emissivity
A0	74.0°C	73.5°C	74.7°C	0.95

Name	Temperature	Emissivity
Hot	77.5°C	0.95



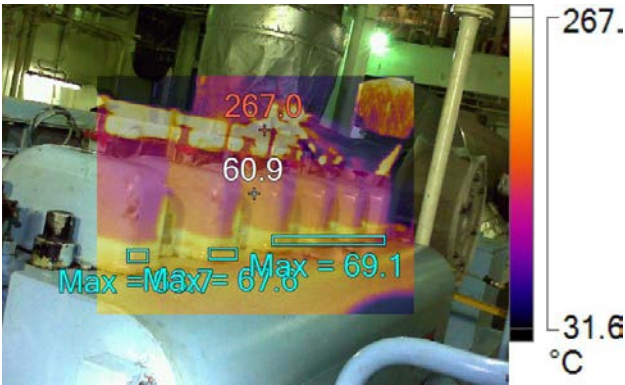
**IR005516.IS2-No2 Aux engine**  
12/4/2016 1:32:01 PM



**Visible Light Image**

**Main Image Markers**

Name	Avg	Min	Max	Emissivity
A0	79.1°C	78.7°C	79.4°C	0.95
A1	75.6°C	75.0°C	76.3°C	0.95



**IR005517.IS2-No2 Aux engine**  
12/4/2016 1:32:29 PM



**Visible Light Image**

**Main Image Markers**

Name	Avg	Min	Max	Emissivity
A0	65.8°C	64.4°C	68.7°C	0.95
A1	65.7°C	63.7°C	67.6°C	0.95
A2	64.2°C	56.5°C	69.1°C	0.95

Name	Temperature	Emissivity
Centerpoint	60.9°C	0.95
Hot	267.0°C	0.95



**IR005518.IS2-No2 Aux engine**  
12/4/2016 1:33:12 PM



**Visible Light Image**

**Main Image Markers**

Name	Temperature	Emissivity
Hot	174.6°C	0.95
P0	136.6°C	0.95
P1	157.8°C	0.95



**IR005720.IS2-No2 Aux engine**  
12/5/2016 8:11:28 AM



**Visible Light Image**

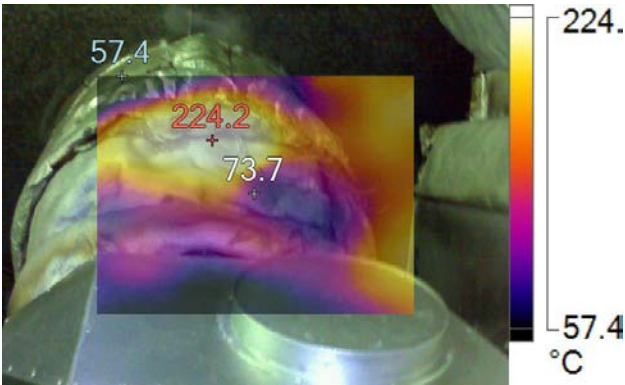
**Compressor platform**

**Main Image Markers**

Name	Temperature	Emissivity
Centerpoint	212.5°C	0.95
Hot	221.9°C	0.95
Cold	56.2°C	0.95

**Temperatures exceeding 220 Deg C is Solas violation and fire hazard**





**IR005721.IS2-No2 Aux engine**  
12/5/2016 8:13:02 AM



**Visible Light Image**

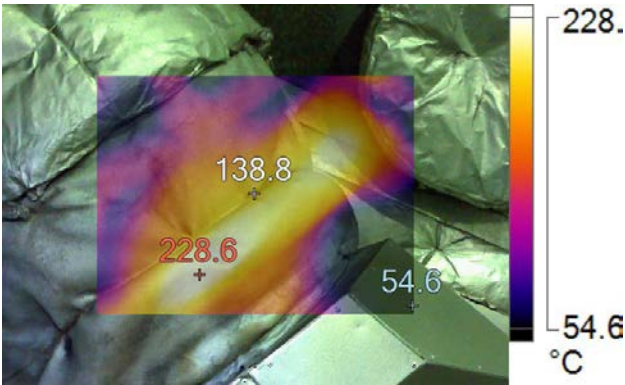
**Compressor platform**

**Main Image Markers**

Name	Temperature	Emissivity
Centerpoint	73.7°C	0.95
Hot	224.2°C	0.95
Cold	57.4°C	0.95

**Temperatures exceeding 220 Deg C is Solas violation & fire hazard**





**IR005722.IS2–No2 Aux engine**  
12/5/2016 8:13:34 AM



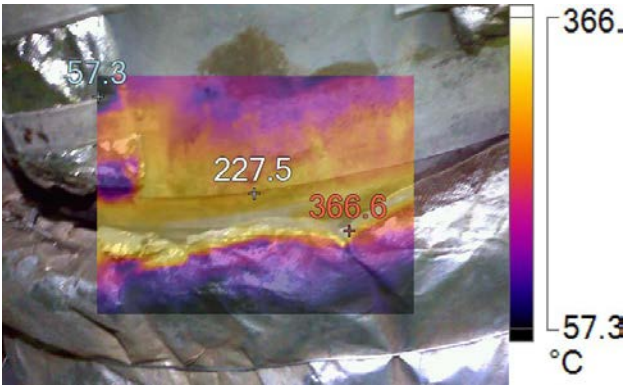
**Visible Light Image**

### Compressor platform

#### Main Image Markers

Name	Temperature	Emissivity
Centerpoint	138.8°C	0.95
Hot	228.6°C	0.95
Cold	54.6°C	0.95

**Temperatures exceeding 220 Deg C is Solas violation & fire hazard**



**IR005723.IS2-No2 Aux engine**  
12/5/2016 8:17:13 AM



**Visible Light Image**

Temperatures exceeding 220 Deg C is Solas violation & fire hazard

**Main Image Markers**

Name	Temperature	Emissivity
Centerpoint	227.5°C	0.95
Hot	366.6°C	0.95
Cold	57.3°C	0.95